

ELISAs

THAT PERFORM



Market-leading products from:



Aspect Scientific specialise in ELISA Automation Systems and offer a range of market-leading instrumentation from DYNEX Technologies, capable of automating any ELISA assay.

Combining flexible and open automation systems with our comprehensive technical service and support to automate your microplate assays, which in turn allows you to implement standardised, accurate and faster testing processes within your laboratory and reduce manual workload.

Any assay, from any kit manufacturer or even in-house developed specialist assays, can all be automated with flexible, open, precise, convenient and reliable instrumentation coupled with our expert Technical Support, Service and Training.

Aspect Scientific are certified as a manufacturer authorised distributor and technical service provider for DYNEX Technologies ELISA Automation Systems. This allows us to deliver the quality of technical service and support that the equipment manufacturer recommends, through manufacturer procedures, genuine DYNEX spare parts, test and calibration equipment.

Aspect Scientific are also UK distributor for DRG Diagnostics and their extensive, high quality range of ELISA products. These high performance ELISAs can be run manually or fully automated with a DYNEX ELISA processor, such as the DS2®, DSX® and Agility® or semi-automated with a DYNEX microplate reader or washer. Providing ease of use, efficiency and reliability.



Index

ELISA Applications	4
DRG ELISA Quality	5
How DYNEX and Aspect Scientific Can Take your ELISA Testing to the Next Level	6
Components of an Automated ELISA System	7
Our Range of ELISA Automation Systems	9
Our Range of Assays	
• Autoimmune Diseases	11
• Endocrinology	13
• Diabetes, Gastrointestinal and Pancreatic	15
• Infectious Diseases	17
• Fertility and Pregnancy	21
• Pituitary/Adrenal Function	23
• Immunology & Haematology	24
• Cardiovascular Diseases	25
• Bone/Mineral Metabolism	25
• Neuropeptides	26
• Growth Factors	26
• Thyroid Function	27
• Vitamins	28
• Tumour Diagnosis	29
• Drug Monitoring	30
• Leukotrienes/Prostaglandins	30
• Saliva Diagnosis	31



DYNEX is a leading manufacturer of microplate instrumentation, seamlessly integrating advanced detection with fully automated sample and plate handling, with powerful software and high quality consumables, to streamline every aspect of ELISA processing.

Thousands of DYNEX ELISA systems are in use worldwide in numerous applications including clinical diagnostics, drug discovery, biomedical research and industrial operations, among others. DYNEX has a proven track record of high quality products and excellent service and support, which is provided in the UK and Ireland by Aspect Scientific.



More than 50 years of Innovative Diagnostics. The DRG Group is a leading manufacturer of immunoassay test systems for clinical diagnostics and research with distribution partners in over 120 countries. Founded in 1970, DRG International, Inc. provides a complete range of products and services to the diagnostic and research communities. DRG International's headquarters is situated in Springfield, New Jersey, USA.

DRG Instruments, Marburg

The German division, DRG Instruments GmbH, was established in 1973 and is located in Marburg. Since 1990, DRG Instruments develops and manufactures innovative immunoassays, both for routine and research applications. With the expansion of DRG in the early nineties, further subsidiaries were founded in Poland, Russia and Czech Republic. DRG is an ISO 13485 certified company and operates within accordance to the FDA 21 CFR 820 Quality System Regulation.



BioCheck, Inc., the parent company of DRG, is located in California, USA, and was founded in April 2021.

Biocheck designs, develops and manufactures high-quality in-vitro diagnostic immunoassay devices for the worldwide biomedical, pharmaceutical, and scientific research markets. BioCheck is an ISO 13485 certified and U.S. FDA 21 CFR Part 820 compliant company that provides quality products and is committed to best-in-class customer care.

Together with DRG subsidiaries, BioCheck's goal is to provide timely results and information so treatment can be implemented earlier, and effectiveness can be analysed sooner to improve patient well-being through sustainable results.

DRG and BioCheck products are supplied in the UK and Ireland through Aspect Scientific.





ELISA Applications

ELISA (Enzyme-Linked Immunosorbent assay) is a plate-based technique that identifies and examines the reaction between antigens and antibodies in a sample. A heterogeneous, immunological determination of substances which has become commonplace in laboratories due to its high level of accuracy, cost effectiveness and minimal risks for the technician.

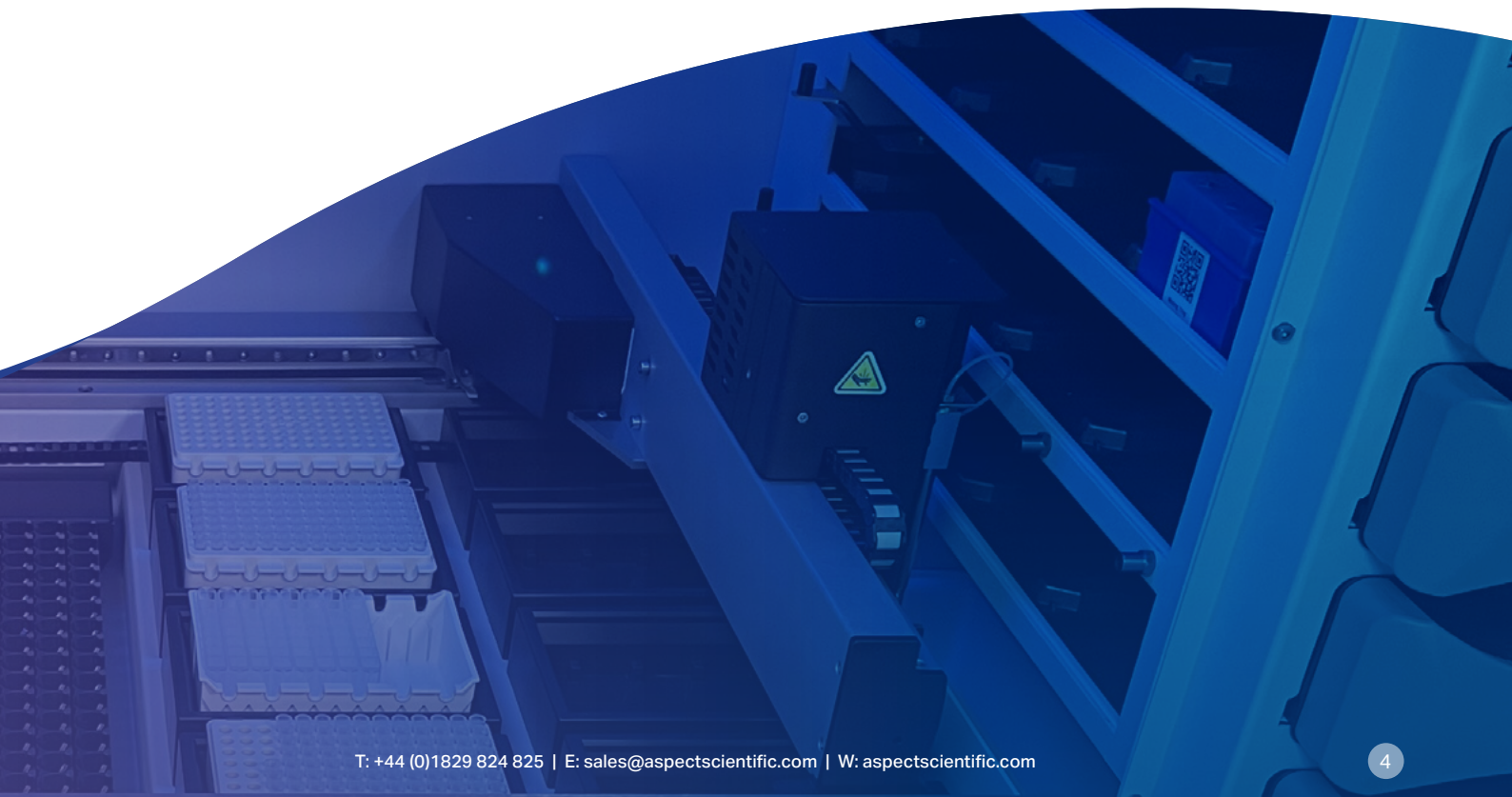
The reaction between antigen and specific antibody is assayed by determination of an enzyme which is conjugated to the antigen or antibody. ELISAs may be designed as competitive or sandwich assays.

ELISAs are used for the determination of drugs, hormones and proteins and do not require the handling of radioactive substances such as with RIA tests, but with similar sensitivities.

This reliability is why ELISA is the chosen method for several screening tests.

Though there are many ELISA testing applications, the most common are:

- Microbiology & bacteriology assays
- Immunology & autoimmunity assays
- Endocrinology assays
- Fertility & pregnancy health
- Hormone testing
- Specialist haematology assays
- Mineral metabolism
- Cancer diagnostics
- Infectious disease / viral testing
- Drug levels and antibody response
- Allergy detection
- Food safety testing





DRG ELISA Quality

DRG Instruments GmbH has established and maintains their Quality Management System to ISO 13485 for the design and development, manufacture and distribution of in-vitro diagnostic test kits used in the diagnosis or detection of transmissible agents and sexually transmissible agents, cancer, prenatal screening, immune status, disease status, autoimmune status, drugs of abuse, cardiac markers, protein metabolism, endocrine disorders, compatibility testing, fertility testing, pregnancy testing, therapeutic drug monitoring and the design and development, installation and service of in-vitro diagnostic analysers.

DRG participate in a number of quality assessment schemes, which include Instand (Germany) and RfB, Referenzinstitut für Bioanalytik, Bonn.

DRG products meet the essential requirements of the Directive 98/79/EC for in-vitro diagnostic medical devices.

Simple protocols and room temperature incubations reduce errors and technician time. Increased confidence in results. Assured continuity of supply. Control of production methods results in economic prices.

- **Breakable Microtiter Wells**
- **Extended shelf life**
- **Good correlation to RIAs and Mass Spectrometry (MS)**
- **Direct determination**
- **Specific**
- **Convenient and economical**
- **Easy to use**
- **Fast**
- **Sensitive**

Why is ELISA Considered a Golden Standard?



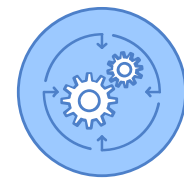
SIMPLE

Traditional method with easy result reading and interpretation



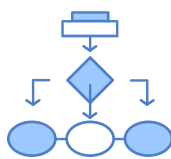
WIDE PORTFOLIO

Large variety of products available



READY FOR AUTOMATION

Broad portfolio of automated analysers suited for our kits



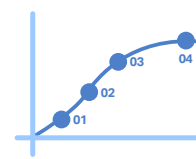
USER-FRIENDLY

Uniform assay procedure, colour-coded and ready-to-use components



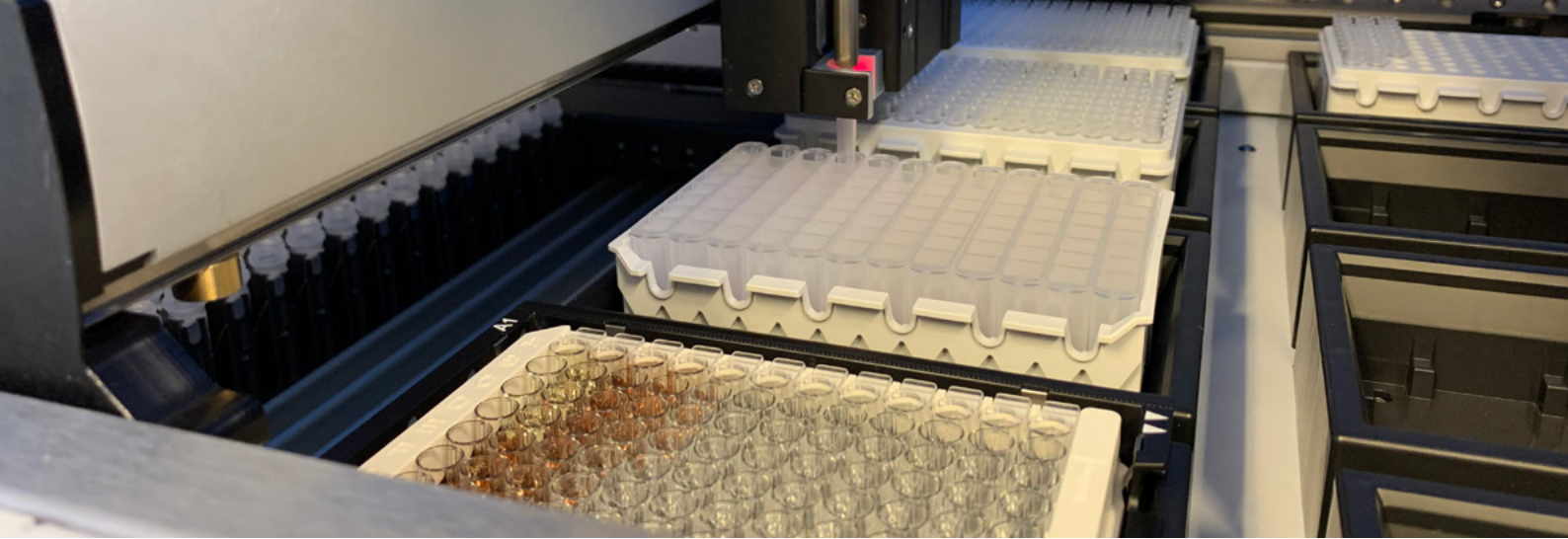
PRECISE

High diagnostic sensitivity and specificity



SEMIQUANTITATIVE & QUANTITATIVE RESULTS

Accurate and reliable results, verified by international reference materials



How DYNEX and Aspect Scientific can take your ELISA Testing to the Next Level

Using automated technology to enhance ELISA applications can improve performance, efficiency and reliability of results in the laboratory.

ELISA is a preferred immunoassay method in the healthcare industry thanks to its simplicity, cost effectiveness and accuracy. ELISA tests can detect and even quantify, a variety of substances that might be present in the sample. This makes it the ideal solution for many different facets of human and animal healthcare diagnostics, environmental testing, drug testing, forensics, food safety and more.

Automated ELISA systems provide a variety of benefits, including:

- **Improved accuracy:** In the medical field, accuracy and precision are vital. Automated technology reduces the risk of human error in the lab and ensures a standardised perfectly reproducible testing process. It also helps streamline the process, resulting in faster test turnaround times and more reliable data first time, with a lower risk of needing to repeat tests.
- **Faster results:** Clinical lab automation for ELISA applications speeds up sampling operations. Automated testing equipment can handle multiple samples at one time and run samples across multiple assays concurrently.
- **Increase in laboratory capacity and efficiency:** Helps you serve your customers with faster sample turnaround times.
- **Higher capacity and throughput:** Automation can help you scale up as your lab is getting busier. As throughput and capacity become an issue when handling larger volumes of samples, automation will allow you to scale up with ease.
- **Time and cost effectiveness:** Investing in an ELISA system can be a smart way to lower costs and protect your organisation's bottom line. With fewer errors and repeat runs, more time and resources, you'll be able to lower long term costs and divert the time saved to other areas.

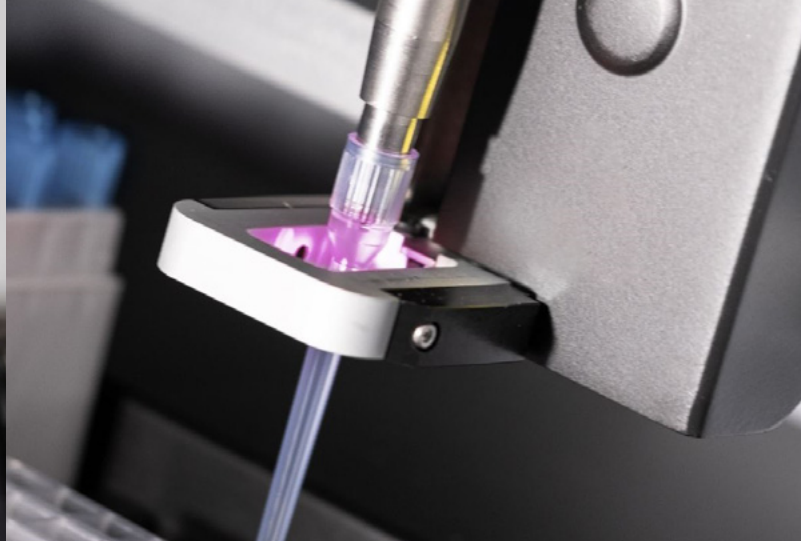
Our goal is to deliver automated ELISA solutions that meet your requirements so you can improve outcomes both in the lab and in patient health. DYNEX have set the standard for microplate testing by designing and manufacturing cutting-edge systems that do more of the work for you than ever before.

DYNEX ELISA automation systems walk you through the process of loading reagents and samples for testing, the equipment handles the rest. True sample in – results out, walkaway automation, with precise controls and mechanisms to ensure quality and traceability.

The DYNEX range includes the most widely used ELISA processor on the market, the DYNEX DS2®. This is a two-plate system with an ingenious compact yet flexible design which easily integrates into any lab, with outstanding ease of use it is the perfect solution for low to medium throughput routine tests. The DYNEX DSX® takes things to another level, a 4-plate system designed for continual workloads with its heavy duty robust design and advanced software capabilities.

The DYNEX Agility® is a technologically advanced, high capacity and high throughput system, capable of handling up to 12 plates at once and up to 16 reagent kits for demanding applications requiring total automation flexibility for multiple assays.

All DYNEX systems are true open platforms, capable of automating almost any assay, from any kit manufacturer or in-house developed specialist assays. The powerful, flexible and feature rich software provides huge capabilities. DYNEX systems are also very well established world-wide and maintain impressive reliability statistics, for the last two years, the DS2® has achieved an uptime of 98.5% and the DSX® has maintained a 98.2% standard.



Components of an Automated ELISA System

The enzyme-linked immunosorbent assay (ELISA) involves many steps, which were traditionally a manual process, so DYNEX Technologies created an automated ELISA processing system for rapid, accurate results for handling higher testing volumes while reducing hands-on time and improving efficiency.

Our systems include different modules and components that are essential to the ELISA process, including plate incubators, washer, reader and automated pipetting

ELISA Microplates

Coated microplates are used to carry out ELISA testing. The microplate wells are where the antigen is secured in place so it can be joined to an antibody linked to a reporter enzyme. This immobilisation is essential because it makes it easy to separate the materials according to what binds together (bound) and what does not (unbound).

The DYNEX Technologies automated process uses 96 well microplates, which allows many samples to be tested at once. The plates are test-specific and supplied in the ELISA kit along with the associated reagents, sample diluent (if required) and wash buffer. The complete ELISA kit provides all the consumable items required for the test process.

Microplate Washer

The ELISA test uses surface binding to separate the target in the sample. For this reason, plate washing is necessary between each step of testing to wash away unbound materials. The plate washing is repeated three to five times for thorough cleaning and the excess wash buffer is removed during the final washing stage.

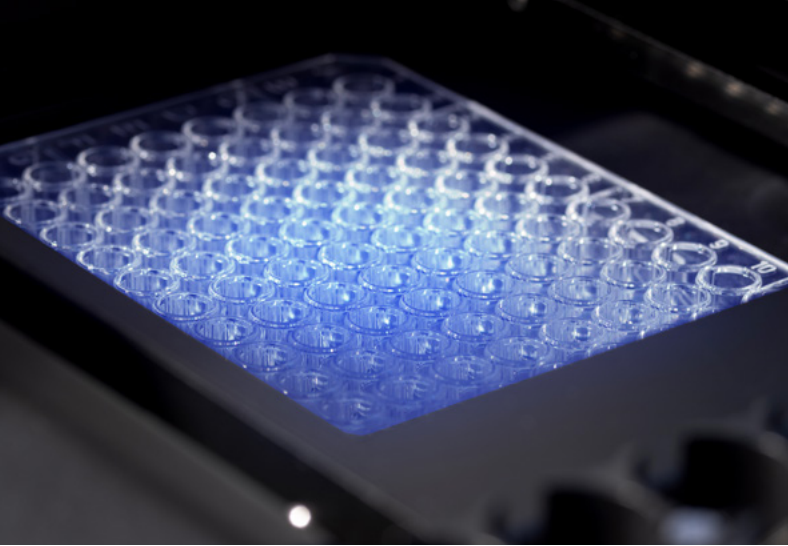
DYNEX Technologies' automated ELISA systems have a very accurate and precise washing module. The wash head is perfectly aligned to the type of microplate being used for the assay, different assays can use different plate and well types with different dimensions all of which is taken into account to ensure precise wash head alignment to the wells.

Washing steps within an assay can be setup to use different wash buffers, dispense specific volumes, include soak times and synchronisation with pipetting timing to ensure consistent results across the plate. High performance aspiration ensures no residual volume is left in the well, the wash head is able to sweep across the well in 5 different positions called a "super-sweep" to remove all fluid leaving the well dry.

Pipetting System

A high precision pipette module attached to a robotic arm that can move across the whole sample and reagent work areas of the system, accessing all areas where liquids are loaded and microplates are handled. It is designed to carry out all sample pipetting, dilutions and reagent dispensing operations.

The automated pipetting system ensures excellent accuracy, speed and precision, while also providing additional safeguards such as ESP (Electronic Signature Pipetting). ESP is a sophisticated DYNEX algorithm for detecting anomalies in pressure and pipetting rate resulting from the presence of particulate matter, clots, foam or bubbles during aspiration of samples, controls and reagents. This ensures reliable and consistent pipetting.



Microplate Incubators

Incubation occurs after the plate has been coated to allow the coating to absorb into the well's surface. This absorption is passive and occurs as a result of the interaction between the amino acid side chain in the antigen or antibody on the well's surface.

Incubation is also carried out following sample and reagent dispensing steps. Often an assay will have multiple incubation steps, possibly at different temperatures, with or without plate shaking and for different time periods DYNEX Technologies' automated ELISA systems allow the plate to incubate at the required temperature and time, which can vary depending on the assay process requirements. Longer times often need a lower temperature, while shorter times need a higher temperature. Plate shaking at varying speeds to aid the process, particularly during a reagent reaction can also be performed

Microplate Reader

The final stage in ELISA is a detection step. This involves the introduction of an enzyme substrate and the intensity of signal produced when the substrate is added will be directly proportional to the amount of antigen/antibody captured in the plate and bound by the detection reagents.

Colorimetric substrates form a soluble, coloured product that accumulates over time relative to the amount of enzyme present in each well. After a specific incubation time, a stop solution is added to end the reaction and provide a fixed end point for the assay. The colour change and level of reaction is detected with an optical absorbance reader set at a specific wavelength as required for the assay.

Protocol Development

DYNEX ELISA automation systems are true open platforms, making it possible to automate almost any ELISA, from any kit manufacturer, not only the kits supplied by Aspect Scientific. Your lab has complete freedom of choice from hundreds of assays, removing any boundaries or constraints found with many laboratory systems where you are locked to reagents available only from the equipment supplier. We believe in true open platform flexibility and scalability.

The standard support and services offered by Aspect Scientific ensure you have full choice of the ELISA kits you wish to run, now and for the future.

Aspect Scientific provide protocol writing and development services to enable the automation of the ELISA kits you wish to run. The powerful flexibility of DYNEX automation with our applications support services provides you with assay choice and options to change if needed.

Our ELISA product specialists can create the assay protocols required and work with you through assay validation to develop / adjust the protocol until you have a working, validated assay. Alternatively, we can provide advanced training courses designed to give you the knowledge and tools to develop assay protocols in house. Support from highly experienced ELISA specialists is always on hand to ensure you always get the best from your automation.





2-Plate ELISA Processing System

The DYNEX DS2® is a fully automated ELISA Processor with full walkaway capability, yet is easy to use and compact. Capable of quickly and easily processing two 96-well microplates and up to 12 different assays simultaneously. The ingenious space saving design incorporates extensive functionality in a minimal footprint.

The DS2® is the most popular and widely used automated ELISA processor on the market, its compact size, flexibility and ease of use makes it suitable for all ELISA applications. A huge number of DS2® systems are relied on by many NHS labs across the UK for critical day to day testing.

The DYNEX DS2® delivers sample-in/results-out complete automation of microplate assays:

- Sample pipetting and dilution
- Automatic barcode scanning
- Microplate incubation, shaking and washing.
- Reagent dilution and dispensing
- Absorbance reading with automatic results interpretation and quality control
- Bi-directional LIS connectivity

Scan for more info



AGILITY®

12-Plate ELISA Processing System

The DYNEX Agility® utilises the versatility of ELISA's core technology in a powerful, fully automated platform, for true ELISA optimisation and high throughput. State-of-the-art robotic processing delivers unparalleled precision while eliminating nearly all manual steps, so Agility® is efficient and reliable – freeing you and your staff to be as productive as possible.

With an intelligent design that emphasises simplicity, Agility® provides an extremely intuitive and easy-to-use interface. Continuous sample loading and reduced consumables means workflow is streamlined for maximum efficiency, speed and productivity, while also providing operating cost savings.

- Flexible and high throughput - allows up to 12 plates on-board at once
- Eliminates most of ELISA's labour-intensive, front-end setup
- Reduces hands-on time by two-thirds of typical open systems
- Full, walkaway processing from the beginning of testing
- Utilises three precision robotic arms - for sample pipetting, reagent pipetting and transporting plates and consumables, to obtain maximum process efficiency

Scan for more info





Scan for more info



4-Plate ELISA Processing System

The DYNEX DSX® is a fully-automated, 4-plate processing system that is capable of performing multiple assays per plate. The modular design provides flexible configuration and was developed with ease-of-use in mind. The DSX® incorporates many features that ensure the quality and security of results and has the flexibility to handle a wide variety of assays.

Simply put, the DSX® offers flexible and reliable sample-in/result-out processing for true walkaway automation.

The DSX® is simplicity at its best. Installation, programming, assay set-up and daily maintenance are all designed to keep you focused on your results, not on the instrument.

DSX®'s modular design facilitates upgrades, repairs and reconfiguration. The DSX® expands on all of the functionality and features of the DS2® to provide a higher capacity, extremely robust and heavy duty system for larger workloads.



DYNAWASH AUTOMATIC Fully Automated Microplate Washer



The DYNAWASH is an extremely compact, new generation, microplate washer yet has all of the functionality and programming capability usually seen on larger fully automated systems.

Assays are programmed with a wide variety of options using easy to use software and are imported to the instrument via USB connection or via SD card. Large 2L containers are supplied for the washing solutions, the instrument can be used with two solutions (wash buffer and water) or can also be extended to use up to four solutions for multiple wash buffer types. The instrument requires minimal maintenance due to its design.

- The DYNAWASH has an outstanding cost/benefit ratio
- The compact and robust design of the instrument brings space saving to the laboratory
- 8 way washing head
- Number of liquids: 2 (4 as an option)

Scan for more info



DYNAREAD Microplate Absorbance Reader



The DYNAREAD is a microplate absorbance reader designed for endpoint and kinetic reading methods with a wide range of optical wavelengths. The system is computer controlled using powerful, yet easy to use software. The Dynaread is a high-quality, robust and low cost solution for microplate reading.

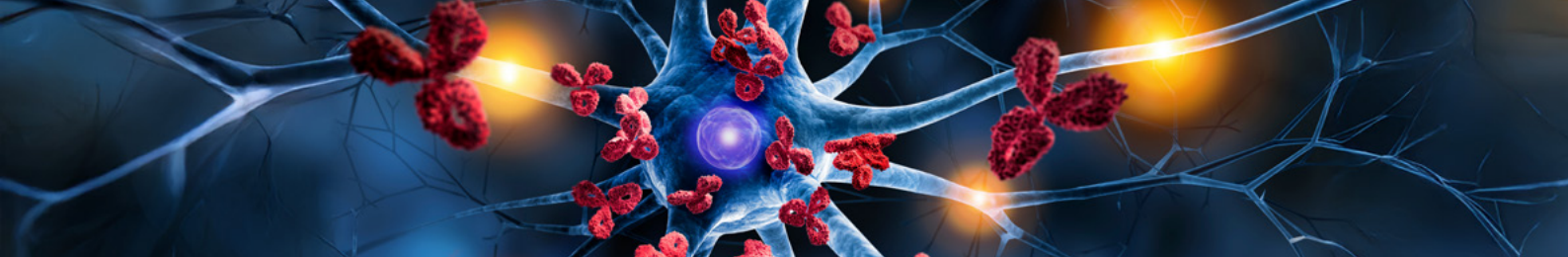
- Absorbance reading and data analysis of 96-well microplates for ELISA
- Linear shaking function, with adjustable speed and amplitude
- Reader control and results data analysis with connected computer system
- Compatible with well-established and widely used DYNEX Revelation software
- Accommodates up to 8 optical filters (4 filters included)
- Wide dynamic range of 0.000 – 4.000 OD
- Long-life, reliable and stable LED light source
- End-point and kinetic read methods
- High-speed 12-channel reading
- Wavelength range 405 – 790 nm

Scan for more info



Autoimmune Diseases

TEST / PRODUCT NAME	PACK SIZE	ITEM CODE
21-Hydroxylase Autoantibody	96 Well Kit	EIA-5955
Alpha-1-Antitrypsin Clearance	96 Well Kit	EIA-5829
Alpha-1-Antitrypsin	96 Well Kit	EIA-5299
Acetylcholine Receptor Autoantibody (AChRAb)	96 Well Kit	EIA-4936
Anti-Mitochondrial Antibody M2 (AMA-M2)	96 Well Kit	EIA-3604
Antinuclear Antibody Combi (ANA-8-Profile)	96 Well Kit	EIA-3563
Antinuclear Antibody Detect	96 Well Kit	EIA-4117
Antinuclear Antibody 8-Screen (ANA-8-Screen)	96 Well Kit	EIA-3562
Anti-Neutrophil Cytoplasmic Antibody Screen (ANCA Screen)	96 Well Kit	EIA-3776
Anti-Annexin V Immunoglobulin G/Immunoglobulin M (IgG/IgM)	96 Well Kit	EIA-3971
Anti-Asialoglycoprotein Receptor Immunoglobulin G (Anti-ASGPR IgG)	96 Well Kit	EIA-4271
Anti-Complement Component 1q (Anti-C1q)	96 Well Kit	EIA-5762
Anti-Cardiolipin Immunoglobulin G (IgG)	96 Well Kit	EIA-6092
Anti-Cardiolipin Immunoglobulin G/Immunoglobulin M (IgG/IgM)	96 Well Kit	EIA-3587
Anti-Cardiolipin Immunoglobulin M (IgM)	96 Well Kit	EIA-6093
Anti-Cyclic Citrullinated Peptide (Anti-CCP)	96 Well Kit	EIA-5653
Anti-Deaminated Gliadin Peptide Immunoglobulin A (IgA)	96 Well Kit	EIA-5081
Anti-Deaminated Gliadin Peptide Immunoglobulin G (IgG)	96 Well Kit	EIA-5080
Anti-Double-Stranded DNA Immunoglobulin G (Anti-dsDNA IgG)	96 Well Kit	EIA-3438
Anti-Double-Stranded DNA Immunoglobulin G (Anti-dsDNA IgG)	96 Well Kit	EIA-6137
Anti-Glutamic Acid Decarboxylase (Anti-GAD)	96 Well Kit	EIA-1910
Anti-Glomerular Basement Membrane (Anti-GBM)	96 Well Kit	EIA-3603
Anti-Gliadin Immunoglobulin A (IgA)	96 Well Kit	EIA-3606
Anti-Gliadin Immunoglobulin G (IgG)	96 Well Kit	EIA-3605
Anti-Histone	96 Well Kit	EIA-3568
Anti-Insulin	96 Well Kit	EIA-3608
Anti-Intrinsic Factor Antibody (IF Ab)	96 Well Kit	EIA-4392
Anti-Histidyl-tRNA Synthetase (Anti-Jo-1)	96 Well Kit	EIA-3581
Anti-Liver Kidney Microsomal Type 1 (Anti-LKM-1)	96 Well Kit	EIA-4277
Anti Ovarian Ab	96 Well Kit	EIA-2937
Anti-Parietal Cell	96 Well Kit	EIA-3607
Anti-Phosphatidylserine Immunoglobulin G/Immunoglobulin M (IgG/IgM)	96 Well Kit	EIA-3592
Anti-Phospholipid Screen Immunoglobulin G/Immunoglobulin M (IgG/IgM)	96 Well Kit	EIA-3591
Anti-Prothrombin Immunoglobulin G/Immunoglobulin M (IgG/IgM)	96 Well Kit	EIA-3612
Anti-Topoisomerase I (Anti-Scl-70)	96 Well Kit	EIA-3580
Anti-Beta-2-Glycoprotein 1 Immunoglobulin G (IgG)	96 Well Kit	EIA-6125
Anti-Beta-2-Glycoprotein 1 Immunoglobulin M (IgM)	96 Well Kit	EIA-6126
Anti-Beta-2-Glycoprotein I Immunoglobulin G/Immunoglobulin M (IgG/IgM)	96 Well Kit	EIA-3590
Anti-Sjögren's-Syndrome-Related Antigen A (Anti-SS-A / Ro)	96 Well Kit	EIA-3573
Anti-Sjögren's-Syndrome-Related Antigen B (Anti-SS-B)	96 Well Kit	EIA-3576
Anti-Thyroglobulin Antibody (Anti-TG Ab)	96 Well Kit	EIA-3708
Anti-Tissue Transglutaminase Screen	96 Well Kit	EIA-4464
Anti-Tissue Transglutaminase Secretory Immunoglobulin A (sIgA, stool)	96 Well Kit	EIA-6169
Anti-Tissue Transglutaminase Immunoglobulin A (IgA)	96 Well Kit	EIA-3611



TEST / PRODUCT NAME	PACK SIZE	ITEM CODE
Anti-Tissue Transglutaminase Immunoglobulin G (IgG)	96 Well Kit	EIA-3882
Aquaporin-4 Autoantibody	96 Well Kit	EIA-5431
Anti-Saccharomyces cerevisiae Antibody Immunoglobulin A (ASCA IgA)	96 Well Kit	EIA-4279
Anti-Saccharomyces cerevisiae Antibody Immunoglobulin G (ASCA IgG)	96 Well Kit	EIA-4280
Anti-Saccharomyces cerevisiae Antibody Immunoglobulin G/Immunoglobulin A (ASCA IgG/IgA)	96 Well Kit	EIA-5107
Bile Acids (Stool) Enzyme Assay	2 x 96 Well /2 Plate Kit	COL-6194
Calprotectin (MRP 8/14) Stool (1h)	96 Well Kit	EIA-5415
Calprotectin (Serum)	96 Well Kit	EIA-5111
Cartilage Oligomeric Matrix Protein	96 Well Kit	EIA-5265
Cytoplasmic Anti-Neutrophil Cytoplasmic Antibody (c-ANCA / PR3) Capture	96 Well Kit	EIA-5980
Eosinophil-Derived Neurotoxin (EDN / EPX)	96 Well Kit	EIA-6111
Extractable Nuclear Antigen Combi (ENA Combi)	96 Well Kit	EIA-3572
Extractable Nuclear Antigen Screen (ENA Screen)	96 Well Kit	EIA-3571
Glutamic Acid Decarboxylase 65 Autoantibody (GAD65)	96 Well Kit	EIA-4087
Gliadin Secretory Immunoglobulin A (sIgA, stool)	96 Well Kit	EIA-5916
Islet Antigen 2 Autoantibody (IA-2 Autoantibody)	96 Well Kit	EIA-4088
Islet Cell Autoantibody (ICA)	96 Well Kit	EIA-1594
Islet Cell Autoantibody 2-Screen (ICA 2-Screen)	96 Well Kit	EIA-4253
Lactoferrin (Stool)	96 Well Kit	EIA-6038
Perinuclear Anti-Neutrophil Cytoplasmic Antibody (pANCA / MPO)	96 Well Kit	EIA-3597
Proteinase 3 Sensitive (PR3 Sensitive)	96 Well Kit	EIA-5429
Rheumatoid Factor Immunoglobulin A (IgA)	96 Well Kit	EIA-3586
Rheumatoid Factor Immunoglobulin G (IgG)	96 Well Kit	EIA-3584
Rheumatoid Factor Immunoglobulin M (IgM)	96 Well Kit	EIA-3585
Secretory Immunoglobulin A (sIgA)	96 Well Kit	EIA-4601
Tryptophan (Stool)	96 Well Kit	EIA-6180
TSH Receptor Ab 3rd generation	96 Well Kit	EIA-4834
TSH Receptor Autoantibody	96 Well Kit	EIA-3369
Zonulin (Serum)	96 Well Kit	EIA-5515
Zonulin (Stool)	96 Well Kit	EIA-5418

Endocrinology

TEST / PRODUCT NAME	PACK SIZE	ITEM CODE
5-Hydroxyindoleacetic Acid (5-HIAA, Urine)	96 Well Kit	EIA-4482
8-Hydroxy-2'-deoxyguanosine	96 Well Kit	EIA-4741
Adrenaline	96 Well Kit	EIA-4306
Albumin	96 Well Kit	EIA-5498
Aldosterone	96 Well Kit	EIA-5298
Angiotensin II	96 Well Kit	EIA-5537
Anti-Oxidised Low-Density Lipoprotein (Anti-oxLDL)	96 Well Kit	EIA-5835
Big Endothelin-1	96 Well Kit	EIA-5856
C-Reactive Protein HS	96 Well Kit	EIA-3954
Catecholamine Combi (Cat Combi)	2 x 96 Well / 2 Plate Kit	EIA-4309
Chymotrypsin	96 Well Kit	EIA-5999
Club Cell Protein (CC16)	96 Well Kit	EIA-5788
Cystatin C	96 Well Kit	EIA-4394
DHT-optimised	96 Well Kit	EIA-5761
Digoxin	96 Well Kit	EIA-3268
Dopamine Research	96 Well Kit	EIA-4824
Dopamine	96 Well Kit	EIA-4161
Endothelin 1	96 Well Kit	EIA-3111
Fibroblast Growth Factor-19 (FGF-19)	96 Well Kit	EIA-5156
Fibroblast Growth Factor-21 Intact (FGF-21)	96 Well Kit	EIA-5538
Gamma-Aminobutyric Acid (GABA, Stool)	96 Well Kit	EIA-6175
Gamma-Aminobutyric Acid (GABA)	96 Well Kit	EIA-5506
Histamine	96 Well Kit	EIA-4005
Histamine (Food)	96 Well Kit	EIA-4428
Histamine Research	96 Well Kit	EIA-4890
Intercellular Adhesion Molecule-1 (ICAM-1)	96 Well Kit	EIA-4781
ImAnOx – Total Antioxidant Status / Total Antioxidant Capacity (TAS/TAC) Enzyme Assay	96 Well Kit	ENZ-5814
L-Kynurenine	96 Well Kit	EIA-5772
Metanephrine Combi (Met Combi, Urine)	2 x 96 Well / 2 Plate Kit	EIA-4083
Metanephrine (Plasma)	96 Well Kit	EIA-4313
Metanephrine (Urine)	96 Well Kit	EIA-4315
Metanephrine Combi (MetCombi, Plasma)	2 x 96 Well / 2 Plate Kit	EIA-4082
Myeloperoxidase (MPO, Stool/Urine)	96 Well Kit	EIA-5597
Myeloperoxidase (MPO)	96 Well Kit	EIA-5660
3-Nitrotyrosine	96 Well Kit	EIA-5693
Noradrenaline	96 Well Kit	EIA-4317
Normetanephrine (Plasma)	96 Well Kit	EIA-4319
Normetanephrine (Urine)	96 Well Kit	EIA-4321
N-Terminal pro-Brain Natriuretic Peptide (Nt-proBNP, Direct)	96 Well Kit	EIA-4827
N-Terminal pro-C-type Natriuretic Peptide (Nt-proCNP)	96 Well Kit	EIA-4683
Oxidised Low-Density Lipoprotein / Malondialdehyde Adducts (ox-LDL/MDA-Adducts)	96 Well Kit	EIA-5656
Oxytocin	96 Well Kit	EIA-3117
Oxytocin	96 Well Kit	EIA-5834
Plasma Renin Activity (PRA)	2 x 96 Well / 2 Plate Kit	EIA-5308
Pro-Atrial Natriuretic Peptide (proANP 1-98)	96 Well Kit	EIA-4703
Renin	96 Well Kit	EIA-5125



TEST / PRODUCT NAME	PACK SIZE	ITEM CODE
Retinol Binding Protein (RBP/RBP4)	96 Well Kit	EIA-4391
Serotonin FAST	96 Well Kit	EIA-5061
Serotonin Research	96 Well Kit	EIA-4642
Tri-Catecholamine (Tri Cat)	3 x 96 Well / 3 Plate Kit	EIA-4080
Tryptophan	96 Well Kit	EIA-5505
Uromodulin	96 Well Kit	EIA-5792
Vasopressin (Arginine-Vasopressin, Arg)	96 Well Kit	EIA-3122
Vitamin D Binding Protein (VDBP)	96 Well Kit	EIA-5088

A little information about our high-sensitivity C-Reactive Protein (CRP) ELISA

Principle of the test:

The C-Reactive Protein HS ELISA is based on the principle of a solid phase enzyme-linked immunosorbent assay. The assay system utilises a unique monoclonal antibody directed against a distinct antigenic determinant on the on the CRP molecule. This mouse monoclonal anti-CRP antibody is used for solid phase immobilisation (on the microtiter wells). A goat anti-CRP antibody is in the antibody-enzyme (horseradish peroxidase) conjugate solution.

The test sample is allowed to react simultaneously with the two antibodies, resulting in the CRP molecules being sandwiched between the solid phase and enzyme-linked antibodies. After a 45-minute incubation at room temperature, the wells are washed with water to remove unbound labelled antibodies. A tetramethylbenzidine (TMB) reagent is added and incubated for 20 minutes, resulting in the development of blue colour. The colour development is stopped with the addition of 1N HCl changing the colour to yellow.

The concentration of CRP is directly proportional the colour intensity of the test sample. Absorbance is measured spectrophotometrically at 450 nm.

CRP Elisa EIA-3954

Cat.No.: EIA-3954
Incubation time: 45 minutes (sample + conjugate) + 20 minutes (TMB)
Standard range: 0-1000 pg/mL
Probe/Sample: 0 – 0.1 mg/L

Ready to use reagents
Internal kit controls

Assay characteristics

CV Intra assay: 2.3% - 7.5%
CV Inter assay: 2.5% - 4.1%
Recovery: 100.4%
Linearity: 99.4%

Diabetes, Gastrointestinal and Pancreatic

TEST / PRODUCT NAME	PACK SIZE	ITEM CODE
Adiponectin	96 Well Kit	EIA-4574
Adiponectin (Total)	96 Well Kit	EIA-5838
Beta-Defensin-2 (Stool)	96 Well Kit	EIA-5700
Calprotectin (Myeloid-Related Protein 8/14, MRP 8/14, Stool, 1h)	96 Well Kit	EIA-5415
Calprotectin (Serum)	96 Well Kit	EIA-5111
C-Peptide	96 Well Kit	EIA-1293
Chemerin	96 Well Kit	EIA-5065
Chymotrypsin	96 Well Kit	EIA-5999
FGF-19	96 Well Kit	EIA-5156
FGF-21 Intact	96 Well Kit	EIA-5538
Gastrin I (1-17)	96 Well Kit	EIA-4501
Ghrelin (Acylated, Easy Sampling)	96 Well Kit	EIA-6029
Ghrelin (Acylated)	96 Well Kit	EIA-4686
Ghrelin (Unacylated)	96 Well Kit	EIA-5247
Insulin Autoantibody (IAA)	96 Well Kit	EIA-1593
Insulin-Like Growth Factor Binding Protein-1 (IGFBP-1)	96 Well Kit	EIA-6086
Insulin	96 Well Kit	EIA-2935
Lactoferrin (Stool)	96 Well Kit	EIA-6038
Leptin Receptor	96 Well Kit	EIA-3527
Leptin (Sandwich)	96 Well Kit	EIA-2395
Omentin-1	96 Well Kit	EIA-5609
Resistin	96 Well Kit	EIA-4572
Resistin	96 Well Kit	EIA-5779
Substance P	96 Well Kit	EIA-3120
Zinc Transporter 8 Autoantibody	96 Well Kit	EIA-5764



New Assays!

- Adiponectin ELISA
- Ghrelin active ELISA
- Leptin Receptor ELISA
- C-Peptide ELISA
- GLP-1 ELISAs
- Leptin ELISA

Examples of assay characteristics

Insulin	
Cat.No.:	EIA-2935
Standard range:	6.25-100 μ LU/mL
High sensitivity:	(1.5 μ LU/mL)
Short incubation time:	30/30/15 min

C-Peptide	
Cat.No.:	EIA-1293
Standard range:	0.2-16 ng/mL
High sensitivity:	(0.5 ng/mL)
No cross reactivity with Insulin and Proinsulin	
Excellent correlation to established RIA's	

Leptin ELISAs	
Cat.No.:	EIA-3527
Standard range:	2-100 ng/mL
Sensitivity:	1.0 ng/mL

Adiponectin	
Cat.No.:	EIA-4574
Incubation:	120/10-15min
Sensitivity:	26 ng/mL

Ghrelin unacylated	
Cat.No.:	EIA-5257
Incubation:	180/30-60min
Sensitivity:	0.2 pg/mL



Scan for more info

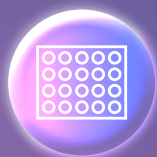


PLATE CAPACITY

Up to 2 plates per run



THROUGHPUT

1-4 plates per day



AUTOMATION

Compact walkaway automation

Parasitology

TEST / PRODUCT NAME	PACK SIZE	ITEM CODE
Ascaris lumbricoides Immunoglobulin A (IgA)	96 Well Kit	EIA-3817
Chagas (Trypanosoma cruzi) Immunoglobulin G (IgG)	96 Well Kit	EIA-5813
Entamoeba histolytica Immunoglobulin G (IgG)	96 Well Kit	EIA-3830
Fasciola hepatica Immunoglobulin G (IgG)	96 Well Kit	EIA-4503
Filariasis	96 Well Kit	EIA-5972
Leishmania infantum Immunoglobulin G (IgG)	96 Well Kit	EIA-3843
Leptospira Immunoglobulin G (IgG)	96 Well Kit	EIA-5751
Leptospira Immunoglobulin M (IgM)	96 Well Kit	EIA-5752
Malaria	96 Well Kit	EIA-5511
Rubella Virus Immunoglobulin G (IgG)	96 Well Kit	EIA-3857
Schistosoma mansoni Immunoglobulin G (IgG)	96 Well Kit	EIA-3872
Schistosoma mansoni Immunoglobulin M (IgM)	96 Well Kit	EIA-5904
Strongyloides Immunoglobulin G/Immunoglobulin M (IgG/IgM)	96 Well Kit	EIA-5812
Taenia solium Immunoglobulin G (IgG)	96 Well Kit	EIA-3859
Toxocara canis Immunoglobulin G (IgG)	96 Well Kit	EIA-3865
Toxoplasma gondii Immunoglobulin A (IgA)	96 Well Kit	EIA-3862
Toxoplasma gondii Immunoglobulin G (IgG)	96 Well Kit	EIA-3519
Toxoplasma gondii Immunoglobulin M (IgM, u-capture)	96 Well Kit	EIA-3864
Trichinella spiralis Immunoglobulin G (IgG)	96 Well Kit	EIA-3866

Fungal

TEST / PRODUCT NAME	PACK SIZE	ITEM CODE
Aspergillus fumigatus Immunoglobulin G (IgG)	96 Well Kit	EIA-6129
Aspergillus fumigatus Immunoglobulin M (IgM)	96 Well Kit	EIA-6130
Candida albicans Immunoglobulin A (IgA)	96 Well Kit	EIA-3457
Candida albicans Immunoglobulin G (IgG)	96 Well Kit	EIA-3458
Candida albicans Immunoglobulin M (IgM)	96 Well Kit	EIA-3459



Bacteriology

TEST / PRODUCT NAME	PACK SIZE	ITEM CODE
Anti-Borrelia Immunoglobulin G (IgG) Line Immunoassay	20 tests	EIA-5300
Anti-Borrelia Immunoglobulin M (IgM) Line Immunoassay	20 tests	EIA-5301
Bartonella Antibody	96 Well Kit	EIA-6119
Bordetella pertussis Immunoglobulin A (IgA)	96 Well Kit	EIA-3449
Bordetella pertussis Immunoglobulin G (IgG)	96 Well Kit	EIA-3450
Bordetella pertussis Immunoglobulin M (IgM)	96 Well Kit	EIA-3451
Bordetella pertussis Toxin (PT) Immunoglobulin A (IgA)	96 Well Kit	EIA-6132
Bordetella pertussis Toxin (PT) Immunoglobulin G (IgG)	96 Well Kit	EIA-6133
Borrelia 14kDa + OspC Immunoglobulin M (IgM)	96 Well Kit	EIA-4288
Borrelia Immunoglobulin G (IgG) + VlsE	96 Well Kit	EIA-4289
Brucella Immunoglobulin G (IgG)	96 Well Kit	EIA-3455
Brucella Immunoglobulin M (IgM)	96 Well Kit	EIA-3456
Cag A Immunoglobulin G (IgG)	96 Well Kit	EIA-5492
Chlamydia Antigen	96 Well Kit	EIA-3460
Transport Medium Chlamydia Antigen	95 vials	EIA-3460TRANS
Swabs Male/Female Chlamydia Antigen	100 Stk.	EIA-3460SWABS
Chlamydia pneumoniae Immunoglobulin A (IgA)	96 Well Kit	EIA-4160
Chlamydia pneumoniae Immunoglobulin G (IgG)	96 Well Kit	EIA-3912
Chlamydia pneumoniae Immunoglobulin M (IgM)	96 Well Kit	EIA-3913
Chlamydia trachomatis Immunoglobulin A (IgA)	96 Well Kit	EIA-3809
Chlamydia trachomatis Immunoglobulin G (IgG)	96 Well Kit	EIA-3810
Chlamydia trachomatis Immunoglobulin M (IgM)	96 Well Kit	EIA-3811
Corynebacterium diphtheriae Toxin Immunoglobulin G (IgG)	96 Well Kit	EIA-3824
Coxiella burnetii (Q-Fever) Phase 1 Immunoglobulin G (IgG)	96 Well Kit	EIA-5188
Coxiella burnetii (Q-Fever) Phase 2 Immunoglobulin G (IgG)	96 Well Kit	EIA-5189
Coxiella burnetii (Q-Fever) Phase 2 Immunoglobulin M (IgM)	96 Well Kit	EIA-5187
Haemophilus influenzae B Immunoglobulin G (IgG)	96 Well Kit	EIA-2530
Helicobacter pylori Immunoglobulin A (IgA)	96 Well Kit	EIA-3483
Helicobacter pylori Immunoglobulin G (IgG)	96 Well Kit	EIA-3484
Helicobacter pylori Immunoglobulin M (IgM)	96 Well Kit	EIA-2111
Legionella pneumophila Immunoglobulin G (IgG)	96 Well Kit	EIA-5645
Legionella pneumophila Immunoglobulin M (IgM)	96 Well Kit	EIA-5646
Meningitis Immunoglobulin G (IgG)	96 Well Kit	EIA-4918
Mycoplasma pneumoniae Immunoglobulin A (IgA)	96 Well Kit	EIA-3848
Mycoplasma pneumoniae Immunoglobulin G (IgG)	96 Well Kit	EIA-3499
Mycoplasma pneumoniae Immunoglobulin M (IgM)	96 Well Kit	EIA-3500
Spotted Fever Group Rickettsia Immunoglobulin G (IgG)	96 Well Kit	EIA-5297
Spotted Fever Rickettsia Immunoglobulin M (IgM)	96 Well Kit	EIA-5846
Tetanus Toxin Immunoglobulin G (IgG)	96 Well Kit	EIA-3514
Treponema pallidum Immunoglobulin G (IgG)	96 Well Kit	EIA-3517
Treponema pallidum Immunoglobulin M (IgM)	96 Well Kit	EIA-4267

Infectious Diseases Continued

Virology

TEST / PRODUCT NAME	PACK SIZE	ITEM CODE
Adenovirus Immunoglobulin A (IgA)	96 Well Kit	EIA-3445
Adenovirus Immunoglobulin G (IgG)	96 Well Kit	EIA-3446
Adenovirus Immunoglobulin M (IgM)	96 Well Kit	EIA-3447
Chikungunya Virus Immunoglobulin G (IgG)	96 Well Kit	EIA-5102
Chikungunya Virus Immunoglobulin M (IgM)	96 Well Kit	EIA-5103
Cytomegalovirus (CMV) Immunoglobulin G (IgG) Buccal Swab	96 Well Kit	SLV-6110
Cytomegalovirus (CMV) Immunoglobulin G (IgG)	96 Well Kit	EIA-3468
CMV IgG (Cytomegalie Virus)	96 Well Kit	EIA-3808
Coxsackie B Virus Immunoglobulin G (IgG)	96 Well Kit	EIA-5493
Coxsackie B Virus Immunoglobulin M (IgM)	96 Well Kit	EIA-5175
Cytomegalovirus (CMV) Immunoglobulin M (IgM)	96 Well Kit	EIA-3823
Dengue Virus Immunoglobulin G (IgG)	96 Well Kit	EIA-3470
Dengue Virus Serotype 2 Immunoglobulin M (IgM)	96 Well Kit	EIA-3471
Epstein–Barr Virus (EBV) Early Antigen (EA) Immunoglobulin G (IgG)	96 Well Kit	EIA-6203
Epstein–Barr Virus (EBV) Early Antigen (EA) Immunoglobulin M (IgM)	96 Well Kit	EIA-6204
Epstein–Barr Virus (EBV) Viral Capsid Antigen (VCA) Immunoglobulin A (IgA)	96 Well Kit	EIA-4472
Epstein–Barr Virus (EBV) EBNA-1 Immunoglobulin G (IgG)	96 Well Kit	EIA-4246
Epstein–Barr Virus (EBV) EBNA-1 Immunoglobulin M (IgM)	96 Well Kit	EIA-4247
Epstein–Barr Virus (EBV) Viral Capsid Antigen (VCA) Immunoglobulin G (IgG)	96 Well Kit	EIA-3475
Epstein–Barr Virus (EBV) Viral Capsid Antigen (VCA) Immunoglobulin M (IgM)	96 Well Kit	EIA-3476
Echinococcus Immunoglobulin G (IgG)	96 Well Kit	EIA-3472
Hantavirus Immunoglobulin G (IgG)	96 Well Kit	EIA-5858
Hantavirus Immunoglobulin M (IgM)	96 Well Kit	EIA-5859
Hepatitis A Virus (HAV) Antibody	96 Well Kit	EIA-4233
Hepatitis A Virus (HAV) Immunoglobulin M (IgM)	96 Well Kit	EIA-4432
Hepatitis E Virus (HEV) Antibody	96 Well Kit	EIA-5805
Hepatitis E Virus (HEV) Immunoglobulin G (IgG)	96 Well Kit	EIA-4145
Hepatitis E Virus (HEV) Immunoglobulin M (IgM)	96 Well Kit	EIA-4417
Herpes Simplex Virus Type 1 (HSV-1) Immunoglobulin G (IgG)	96 Well Kit	EIA-3485
Herpes Simplex Virus Type 1 (HSV-1) Immunoglobulin M (IgM)	96 Well Kit	EIA-3486
Herpes Simplex Virus Types 1 + 2 (HSV-1+2) Immunoglobulin G (IgG)	96 Well Kit	EIA-3489
Herpes Simplex Virus Types 1 + 2 (HSV-1+2) Immunoglobulin M (IgM)	96 Well Kit	EIA-3490
Herpes Simplex Virus Type 2 (HSV-2) Immunoglobulin G (IgG)	96 Well Kit	EIA-3487
Herpes Simplex Virus Type 2 (HSV-2) Immunoglobulin M (IgM)	96 Well Kit	EIA-3488
Influenza Virus A Immunoglobulin A (IgA)	96 Well Kit	EIA-3792
Influenza Virus A Immunoglobulin G (IgG)	96 Well Kit	EIA-3793
Influenza Virus A Immunoglobulin M (IgM)	96 Well Kit	EIA-3794
Influenza Virus B Immunoglobulin A (IgA)	96 Well Kit	EIA-3795
Influenza Virus B Immunoglobulin G (IgG)	96 Well Kit	EIA-3796
Influenza Virus B Immunoglobulin M (IgM)	96 Well Kit	EIA-3797
Japanese Encephalitis Virus (JEV) Immunoglobulin M (IgM) Capture	96 Well Kit	EIA-4505
Measles Virus Immunoglobulin G (IgG)	96 Well Kit	EIA-3844
Measles Virus Immunoglobulin M (IgM)	96 Well Kit	EIA-3845
Mumps Virus Immunoglobulin G (IgG)	96 Well Kit	EIA-3846



TEST / PRODUCT NAME	PACK SIZE	ITEM CODE
Mumps Virus Immunoglobulin M (IgM)	96 Well Kit	EIA-3847
Parainfluenza Virus Immunoglobulin A (IgA)	96 Well Kit	EIA-3871
Parainfluenza Virus Immunoglobulin G (IgG)	96 Well Kit	EIA-3870
Parvovirus B19 Immunoglobulin G (IgG)	96 Well Kit	EIA-3503
Parvovirus B19 Immunoglobulin M (IgM)	96 Well Kit	EIA-3504
Rabies Virus Antibody	96 Well Kit	EIA-5900
Respiratory Syncytial Virus (RSV) Immunoglobulin A (IgA)	96 Well Kit	EIA-3506
Respiratory Syncytial Virus (RSV) Immunoglobulin G (IgG)	96 Well Kit	EIA-3507
Respiratory Syncytial Virus (RSV) Immunoglobulin M (IgM)	96 Well Kit	EIA-3508
Rubella Virus Immunoglobulin M (IgM) u-capture	96 Well Kit	EIA-3858
Tick-Borne Encephalitis Virus (TBEV) Immunoglobulin G (IgG)	96 Well Kit	EIA-3860
Tick-Borne Encephalitis Virus (TBEV) Immunoglobulin M (IgM)	96 Well Kit	EIA-3861
Varicella Zoster Virus (VZV) Immunoglobulin A (IgA)	96 Well Kit	EIA-3522
Varicella Zoster Virus (VZV) Immunoglobulin G (IgG)	96 Well Kit	EIA-3523
Varicella Zoster Virus (VZV) Immunoglobulin M (IgM)	96 Well Kit	EIA-3524
West Nile Virus Immunoglobulin M (IgM) Capture	96 Well Kit	EIA-4504
Zika Virus Immunoglobulin G (IgG) Capture	96 Well Kit	EIA-5984
Zika Virus Immunoglobulin M (IgM) μ -capture	96 Well Kit	EIA-5908

AGILITY[®]



Scan for more info

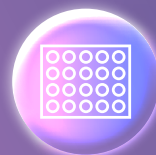


PLATE CAPACITY

Up to 12 plates per run



THROUGHPUT

1-20 plates per day



AUTOMATION

Fully automated & intelligent scheduling

Fertility and Pregnancy

TEST / PRODUCT NAME	PACK SIZE	ITEM CODE
17-Hydroxyprogesterone (17-OH Progesterone)	96 Well Kit	EIA-1292
3 α -Diol G	96 Well Kit	EIA-4192
AFP	96 Well Kit	EIA-1468
Anti-Müllerian Hormone (AMH)	96 Well Kit	EIA-6141
Androstenedione	96 Well Kit	EIA-3265
Androstenedione Saliva	96 Well Kit	SLV-4780
Anti-Ovarian Antibody	96 Well Kit	EIA-2937
Anti-Zona Pellucida Antibody	96 Well Kit	EIA-6138
Dehydroepiandrosterone (DHEA)	96 Well Kit	EIA-3415
Dehydroepiandrosterone Sulfate (DHEA-S)	96 Well Kit	EIA-1562
Dihydrotestosterone (DHT, Optimised)	96 Well Kit	EIA-5761
Estradiol	96 Well Kit	EIA-2693
Estriol Total	96 Well Kit	EIA-6193
Estrone	96 Well Kit	EIA-4174
Free Estriol	96 Well Kit	EIA-1612
Free β -HCG	96 Well Kit	EIA-4718
Free Testosterone	96 Well Kit	EIA-2924
Follicle Stimulating Hormone (FSH)	96 Well Kit	EIA-1288
Human Chorionic Gonadotropin (HCG)	96 Well Kit	EIA-1469
Human Placental Lactogen (HPL)	96 Well Kit	EIA-1283
Luteinising Hormone (Serum)	96 Well Kit	EIA-1289
Luteinising Hormone (Urine)	96 Well Kit	EIA-1290
Pregnancy-Associated Plasma Protein A (PAPP-A)	96 Well Kit	EIA-2397
Placental Growth Factor (PLGF)	96 Well Kit	EIA-4529
Polymorphonuclear Elastase (Serum/Plasma)	96 Well Kit	EIA-5865
Pregnenolone Direct	96 Well Kit	EIA-4170
Progesterone	96 Well Kit	EIA-1561
Prolactin	96 Well Kit	EIA-1291
Salivary 17-OH Progesterone	96 Well Kit	SLV-3140
Salivary DHEA	96 Well Kit	SLV-3012
Salivary Estradiol High Sensitivity (HS)	96 Well Kit	SLV-6145
Salivary Testosterone	96 Well Kit	SLV-3013
Sex Hormone Binding Globulin (SHBG)	96 Well Kit	EIA-2996
Sperm Antibody (Seminal Plasma)	96 Well Kit	EIA-4249
Sperm Antibody	96 Well Kit	EIA-1826
β -HCG	96 Well Kit	EIA-1911
Testosterone	96 Well Kit	EIA-1559

A little information about our PLGF assay, a new marker for Preeclampsia

Principle of the test:

In 5-8 percent of all pregnancies, Preeclampsia causes an increase in the mother's blood pressure, excretion of protein, and edemas - in the majority of cases, this occurs in the last trimester of pregnancy.

These clinical conditions, together termed Preeclampsia, are a risk for mother and child which can make it necessary to induce premature birth.

Studies about Preeclampsia have shown that important growth factors are affected. This causes malnutrition of placenta and foetus.

It is now possible to measure the concentration of one of the growth factors involved - PLGF - in blood.

The PLGF ELISA allows the early detection (15th week of pregnancy) of the developmental risk factors of preeclampsia and is therefore an important new tool in the health protection of mother and child.

PLGF Elisa EIA-4529

Cat.No.: EIA-4529
Incubation time: 2.5 h
Standard range: 0-1000 pg/mL
Probe/Sample: 25 µL Serum

Ready to use reagents
Internal kit controls

Assay characteristics

CV Intra assay: 1.68%- 2.83%
CV Inter assay: 4.10% - 7.00%
Recovery: 87.0%- 105.5%
Linearity: 88.1% - 112.6%



Scan for more info

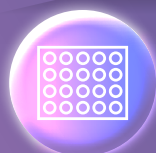


PLATE CAPACITY

Up to 4 plates per run



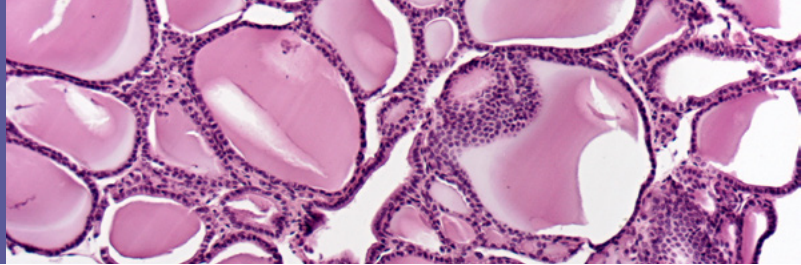
THROUGHPUT

1-8 plates per day



AUTOMATION

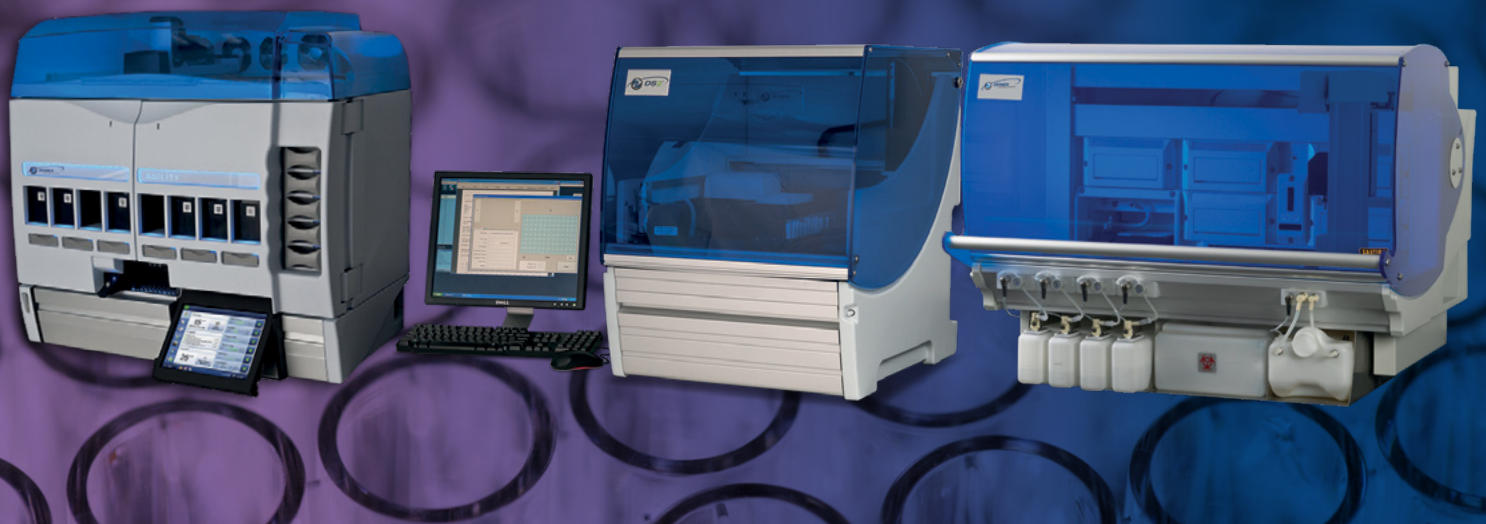
Walkaway 4-plate system



TEST / PRODUCT NAME	PACK SIZE	ITEM CODE
Adrenocorticotrophic Hormone (ACTH)	96 Well Kit	EIA-3647
Corticosterone	96 Well Kit	EIA-4164
Cortisol	96 Well Kit	EIA-1887
Cortisone	96 Well Kit	EIA-6078
Gastrin	96 Well Kit	EIA-4187
Gastrin I (1-17)	96 Well Kit	EIA-4501
Lipocalin-2 / Neutrophil Gelatinase-Associated Lipocalin (NGAL)	96 Well Kit	EIA-5776
Plasma Renin Activity (PRA)	2 x 96 Well / 2 Plate Kit	EIA-5308
Salivary Cortisol	96 Well Kit	SLV-2930
Urinary Cortisol	96 Well Kit	EIA-2989

Aspect Scientific can help you:

- Improve your ELISA testing efficiency, processing more samples per day
- Reduce or even eliminate labour intensive manual steps
- Have the capability and confidence to automate almost any ELISA assay
- Implement standardised testing processes, greatly reducing room for error
- Have the capacity and throughput ability to deal with increasing sample numbers
- Free up staff for other tasks, while samples are being processed with complete automation





TEST / PRODUCT NAME	PACK SIZE	ITEM CODE
Annexin V	96 Well Kit	EIA-5208
Complement Hemolytic 50% (CH50)	96 Well Kit	EIA-3989
Circulating Immune Complex C1q (CIC C1q)	96 Well Kit	EIA-3169
C-Reactive Protein High Sensitivity (CRP HS)	96 Well Kit	EIA-3954
Erythropoietin (EPO)	96 Well Kit	EIA-3646
Granulocyte-Macrophage Colony-Stimulating Factor (GM-CSF)	96 Well Kit	EIA-4859
Hepcidin 25 (Bioactive, High Sensitivity)	96 Well Kit	EIA-5782
Histamine	96 Well Kit	EIA-4005
Interferon-gamma (IFN- γ)	96 Well Kit	EIA-4434
Interleukin-10	96 Well Kit	EIA-4699
Interleukin-15	96 Well Kit	EIA-5992
Interleukin-1 Beta (IL-1 β)	96 Well Kit	EIA-4437
Interleukin-2	96 Well Kit	EIA-5706
Interleukin-6	96 Well Kit	EIA-4640
Interleukin-8	96 Well Kit	EIA-4700
Immunoglobulin E (IgE)	96 Well Kit	EIA-1788
Interleukin-13	96 Well Kit	EIA-4841
Interleukin-17A	96 Well Kit	EIA-4840
Interleukin-1 Alpha	96 Well Kit	EIA-4839
Monocyte Chemoattractant Protein-1 (MCP-1)	96 Well Kit	EIA-4857
Matrix Metalloproteinase-1 (MMP-1)	96 Well Kit	EIA-5162
Prostatic Acid Phosphatase (PAP)	2 x 96 Well / 2 Plate Kit	EIA-3763
Polymorphonuclear Elastase (PMN)	96 Well Kit	EIA-4856
Polymorphonuclear Elastase (PMN, Stool)	96 Well Kit	EIA-5699
Procalcitonin	96 Well Kit	EIA-5291
Soluble CD40 Ligand (sCD40L, Mouse)	96 Well Kit	EIA-5191
Soluble E-Selectin (sE-Selectin)	96 Well Kit	EIA-4775
Soluble FAS-Ligand (sFAS-Ligand)	96 Well Kit	EIA-4855
Soluble L-Selectin (sL-Selectin)	96 Well Kit	EIA-4875
Soluble Transferrin Receptor (sTfR)	96 Well Kit	EIA-5925
Soluble Vascular Cell Adhesion Molecule-1 (sVCAM-I)	96 Well Kit	EIA-4873
sVEGF-R1 (RUO)	96 Well Kit	EIA-4822
Tumor Necrosis Factor-beta (TNF-beta)	96 Well Kit	EIA-5128
Tumor Necrosis Factor-alpha (TNF- α)	96 Well Kit	EIA-4641
VEGF-A (RUO)	96 Well Kit	EIA-4826
VEGF-C (RUO)	96 Well Kit	EIA-4825

Cardiovascular Diseases



TEST / PRODUCT NAME	PACK SIZE	ITEM CODE
Aldosterone	96 Well Kit	EIA-5298
Digoxin	96 Well Kit	EIA-3268
Ox-LDL/MDA-Adducts	96 Well Kit	EIA-5656
Renin	96 Well Kit	EIA-5125

Bone / Mineral Metabolism



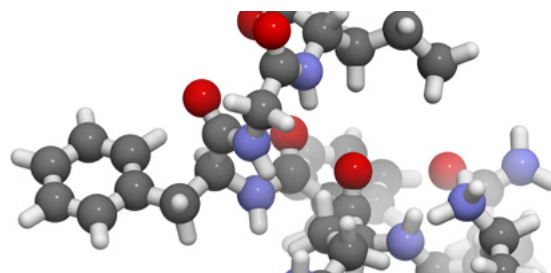
TEST / PRODUCT NAME	PACK SIZE	ITEM CODE
1,25 (OH) ₂ Vitamin D	96 Well Kit	EIA-4193
25-OH Vitamin D (total)	96 Well Kit	EIA-5396
Ferritin	96 Well Kit	EIA-4408
Fibroblast Growth Factor-23 (FGF23)	96 Well Kit	EIA-6060
Osteocalcin	96 Well Kit	EIA-3375
Osteocalcin 1-43/49	96 Well Kit	EIA-5504
Osteopontin	96 Well Kit	EIA-3116
Osteoprotegerin	96 Well Kit	EIA-4573
Parathyroid Hormone (PTH, Intact)	96 Well Kit	EIA-3645
Parathyroid Hormone (PTH, Intact)	96 Well Kit	EIA-5953
Vitamin B12	96 Well Kit	EIA-5848

Growth Factors



TEST / PRODUCT NAME	PACK SIZE	ITEM CODE
Insulin-like Growth Factor 1 (IGF-1) 600	96 Well Kit	EIA-4140
Insulin-like Growth Factor Binding Protein 3 (IGF-BP3)	96 Well Kit	EIA-5049
Myostatin	96 Well Kit	EIA-5691
Soluble Vascular Endothelial Growth Factor Receptor 1 (sVEGF-R1) (RUO)	96 Well Kit	EIA-4822
Vascular Endothelial Growth Factor A (VEGF-A) (RUO)	96 Well Kit	EIA-4826
Vascular Endothelial Growth Factor C (VEGF-C) (RUO)	96 Well Kit	EIA-4825

Neuropeptides



TEST / PRODUCT NAME	PACK SIZE	ITEM CODE
BDNF (Brain-Derived Neurotrophic Factor)	96 Well Kit	EIA-5968
MSH alpha	96 Well Kit	EIA-5973
Substance P	96 Well Kit	EIA-3120





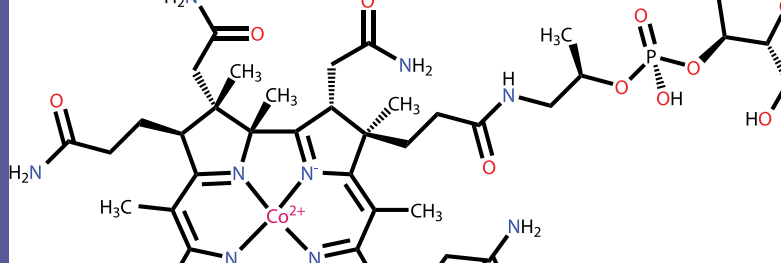
TEST / PRODUCT NAME	PACK SIZE	ITEM CODE
Anti-Thyroglobulin Antibody (Anti-TG Ab)	96 Well Kit	EIA-3708
Free Thyroxine (Free T4)	96 Well Kit	EIA-3775
Free Triiodothyronine (Free T3)	96 Well Kit	EIA-3801
Reverse Triiodothyronine (Reverse T3)	96 Well Kit	EIA-6049
Thyroid Stimulating Hormone (TSH)	96 Well Kit	EIA-4171
Thyroid Stimulating Hormone Receptor Antibody (3rd Generation)	96 Well Kit	EIA-4834
Thyroid Stimulating Hormone Receptor Autoantibody	96 Well Kit	EIA-3369
Total Thyroxine (T4 Total)	96 Well Kit	EIA-4568
Total Triiodothyronine (T3 Total)	96 Well Kit	EIA-4569

We offer a range of Thyroid Function ELISAs, including Free T3, Total T3, Free T4, Total T4, Reverse T3 and TSH!

A little about our Reverse T3 assay

The Reverse T3 ELISA is a competitive enzyme immunoassay for the direct quantitative determination of Reverse Triiodothyronine (rT3) in human serum and plasma. The antigen (rT3 present in the kit calibrators, controls and in patient samples) competes with a biotin-labelled antigen (rT3-Biotin conjugate) for a limited quantity of antibody which is coated on the microplate wells. This high performance, CE marked, quantitative assay includes 6 calibrators and two quality controls.

Cat.No.:	EIA-6049
Incubation time:	1 h 45 min
Standard range:	0-2.0 ng/mL
Sample:	25ul Serum or Plasma
Sensitivity:	Limit of detection 0.014ng/mL



TEST / PRODUCT NAME	PACK SIZE	ITEM CODE
1,25 (OH) 2 Vitamin D	96 Well Kit	EIA-4193
1,25 (OH) 2 Vitamin D	96 Well Kit	EIA-5810
25-OH Vitamin D (total)	96 Well Kit	EIA-5396
Folic Acid	96 Well Kit	EIA-5847
Vitamin B1 (Thiamin) Bio-Assay	96 Well Kit	BIO-5136
Vitamin B1	96 Well Kit	EIA-5848
Vitamin B12 Bio-Assay	96 Well Kit	BIO-4883
Vitamin B2 (Riboflavin) Bio-Assay	96 Well Kit	BIO-4887
Vitamin B6 (Pyridoxin) Bio-Assay	96 Well Kit	BIO-4885
Vitamin Biotin Bio-Assay	96 Well Kit	BIO-4884
Vitamin C Enzyme Assay	96 Well Kit	ENZ-4888
Vitamin Folic Acid Bio-Assay	96 Well Kit	BIO-4886
Vitamin Niacin Bio-Assay	96 Well Kit	BIO-4882
Vitamin Pantothenic Acid Bio-Assay	96 Well Kit	BIO-5264

A little information about our 25-OH Vitamin D Total assay, a reliable and fast way to discover 25-OH Vitamin D Total

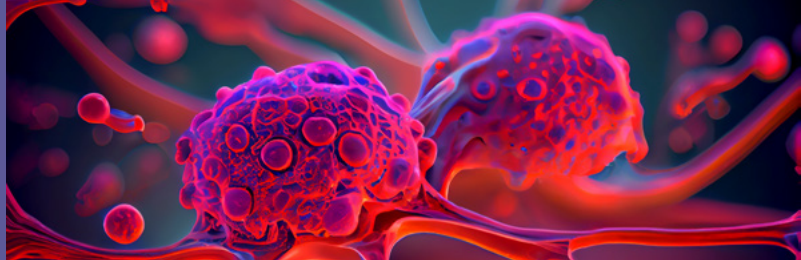
The DRG 25-OH Vitamin D Total ELISA (Order No. EIA-5396) is an enzyme immunoassay for the quantitative in vitro diagnostic measurement of 25-OH Vitamin D in serum and plasma.

Advantages of DRG ELISA

- Straight forward sample preparation
- Measurement of 25-OH-Vitamin D2 and D3
- First results in less than 2 hours
- Standards are calibrated against international NIST Standard Reference Material (SRM) 2972
- Two controls included in the kit
- Good correlation to Diasorin LIAISON and re-developed Roche Cobas

Assay characteristics

Assay Principle:	Competitive ELISA
Dynamic range:	2.9-130 ng/mL
Total assay time:	approx. 2 h (30 min pre-treatment; 60+15 min ELISA)
Sample volume:	25 µL Serum or Plasma (EDTA, Citrate, Heparin)
Intra Assay precision:	4.7%
Inter Assay precision:	10.2%
Specificity:	100% 25-OH-Vitamin D3; 74.7% 25-OH-Vitamin D2
Analytical sensitivity:	2.89 ng/mL



TEST / PRODUCT NAME	PACK SIZE	ITEM CODE
Carcinoembryonic Antigen (CEA)	96 Well Kit	EIA-1868
Chromogranin A	96 Well Kit	EIA-4937
Ferritin	96 Well Kit	EIA-4408
Free Beta-Human Chorionic Gonadotropin (Free β -HCG)	96 Well Kit	EIA-4718
Osteocalcin	96 Well Kit	EIA-3375
Thromboxane B2	96 Well Kit	EIA-4189
Total 8-iso Prostaglandin F2 α	96 Well Kit	EIA-3719
S100B (RUO)	96 Well Kit	EIA-4555
Beta-Human Chorionic Gonadotropin (β -HCG)	96 Well Kit	EIA-1911
Tumour Marker CA 125 (TM-CA 125)	96 Well Kit	EIA-5072
Tumour Marker CA 72-4 (TM-CA 72-4)	96 Well Kit	EIA-5071
Tumour Marker CYFRA 21-1 (TM-CYFRA 21-1)	96 Well Kit	EIA-5070

A little information about our Tumormarker TM-CA 72-4 assay

The DRG TM-CA 72-4 ELISA Kit is a solid phase enzyme-linked immunosorbent assay (ELISA) based on the sandwich principle.

The microtiter wells are coated with a monoclonal [mouse] antibody directed towards a unique antigenic site on a CA 72-4 molecule. An aliquot of patient sample containing endogenous CA 72-4 is incubated in the coated well with enzyme conjugate, which is an anti-CA 72-4 antibody conjugated with horseradish peroxidase. After incubation the unbound conjugate is washed off.

The amount of bound peroxidase is proportional to the concentration of CA 72-4 in the sample.

Having added the substrate solution, the intensity of colour developed is proportional to the concentration of CA 72-4 in the patient sample.

Cat.No.:	EIA-5071
Incubation time:	2.5 h
Standard range:	3-100 U/ml
Sample:	20 μ L Serum or Plasma
Sensitivity:	0.79 U/ml
CV Intra Assay:	1.55-2.41 %
CV Inter Assay:	12.7-13.9 %
Recovery:	88.2-106.8 %
Linearity:	86.0-112.3 %

**Internal kit control
CE marked**

Drug Monitoring



TEST / PRODUCT NAME	PACK SIZE	ITEM CODE
Cotinine	96 Well Kit	EIA-5917

Leukotrienes / Prostaglandins



TEST / PRODUCT NAME	PACK SIZE	ITEM CODE
Prostacyclin (Urinary)	96 Well Kit	EIA-3108
Prostaglandin E2	96 Well Kit	EIA-5811
Thromboxane B2	96 Well Kit	EIA-3105
Total 8-iso Prostaglandin F2a	96 Well Kit	EIA-3080



TEST / PRODUCT NAME	PACK SIZE	ITEM CODE
Salivary Androstenedione	96 Well Kit	SLV-4780
Salivary Melatonin Direct	96 Well Kit	SLV-4779
Salivary 17-Hydroxyprogesterone (17-OH Progesterone)	96 Well Kit	SLV-3140
Salivary Cortisol	96 Well Kit	SLV-2930
Salivary Dehydroepiandrosterone (DHEA)	96 Well Kit	SLV-3012
Salivary Dehydroepiandrosterone Sulphate (DHEA-S)	96 Well Kit	SLV-4409
Salivary Estrone	96 Well Kit	SLV-5228
Salivary Immunoglobulin A (IgA)	96 Well Kit	SLV-4636
Salivary Progesterone High Sensitivity (HS)	96 Well Kit	SLV-5911
Salivary Testosterone	96 Well Kit	SLV-3013

Sensitive ELISAs for detection of free steroids and other parameters in saliva samples

Benefits

- Non-invasive sampling, can be done also by patients
- Measurement of the free (unbound) fraction of steroids
- Much higher diagnostic relevance with reproducible and reliable results, compared to serum analytics
- Simple and patient-friendly measurement of hormone profiles (Diurnal-, monthly profiles)
- Easy sampling in babies and kids
- The measurement of steroids in veterinary saliva samples is possible without any further pre-treatment

Sampling device

As saliva contains only tiny amounts of protein non-polar analytes such as steroids tend to adsorb to various plastic surfaces. Glass would tend to be the best material for saliva sampling and for the most part Polyethylene, although it is still in use in many laboratories worldwide, should be avoided.

However there is an inexpensive polypropylene device available from DRG (Sali-Tubes). It does not show any interference in saliva even in Progesterone testing, which is the most critical steroid.

Our full range of ELISA Automation

Aspect Scientific specialise in ELISA automation systems and offer a range of instrumentation capable of automating almost any ELISA test and any level of workload.

Combining flexible, convenient and open systems with our comprehensive service and support to automate your microplate assays, allowing you to implement standardised, accurate and faster testing processes and greatly reduce manual workload.

From single microplate readers and washers, up to fully automated 2, 4 & 12 plate systems, we offer a range of solutions designed to fit your workload and your budget.



Contact us today to discuss enhancing your assays
with proven market-leading automation systems.

True open platform!

Aspect Scientific provide assay protocol writing and development services to enable the automation of almost any ELISA kit, whether the kit is supplied by us or another supplier. The automation systems are completely open platforms, to allow the customer true choice over which assays to run, regardless of supplier.

Assay protocols are available for the Dynex DS2®, DSX® and Agility® systems. Protocols can also be created to automate assays from any other supplier, to enable the customer to run a mixture of assays from different suppliers.



Services provided with all automation systems:

- 12 month warranty, which includes comprehensive service and support, including 6 monthly PM visits included
- Comprehensive service contracts available following warranty, with various term options
- Delivery, installation and user training free of charge
- Basic operator training and advanced training available at any point
- Writing of assay protocols for any compatible ELISA included free of charge for 12 months
- Support during assay validation



Notes

A series of horizontal dotted lines for taking notes.

To place an order or for more information, please contact us:

Email: sales@aspectscientific.com

Tel: +44 (0)1829 824 825

www.aspectscientific.com

